

MEASUREMENT REGULATION SUBSTATION

PURPOSE

The measurement regulation substation is intended to decrease pressure, to regulate the pressure during the operating period of the equipment and to measure the consumption of natural gases.

Depending on the mounting needs, the equipment for reducing pressure and measuring natural gas consumption can be placed in separate cabins.

COMPONENTS

- Pressure regulator
- Gas meter
- Box
- Tap
- Fittings and pipes
- Fixing elements

TECHNICAL CHARACTERISTICS

- Input pressure: max. 2 bar
- Output pressure: 13...23 and/or 23...45 mbar
- Connections: Input - 1"
Output - 3/4" or 1"
- Constructive versions: - with gas meters made by AEM, Types G1.6; G2.5; G4; G6
- The box made of plastic with fibreglass, resistant to impact, to high temperatures, flammability class VO, in accordance with UL 94

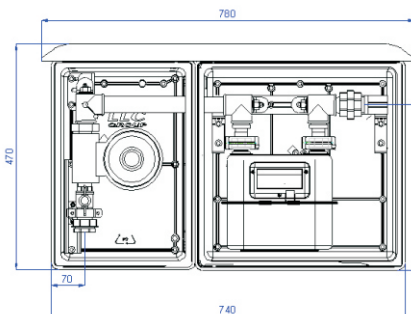
REFERENCE DOCUMENTS

- Normative NTPEE-2009
- Diaphragm Gas meters SR EN 1359

CONSTRUCTIVE VERSIONS:

Weight and layout dimensions:

Measurement-regulation substation:

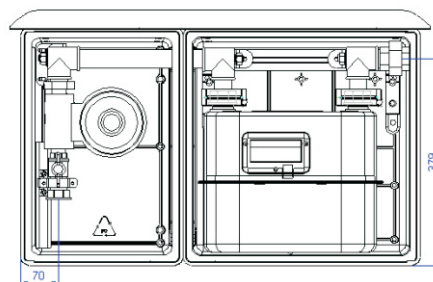


Measurement regulation substation
Type PRM-G4-Common

RMG Regulator, gas meter
Type G4, (optional G2.5 or G1.6).

Input 1", Output 3/4"
side

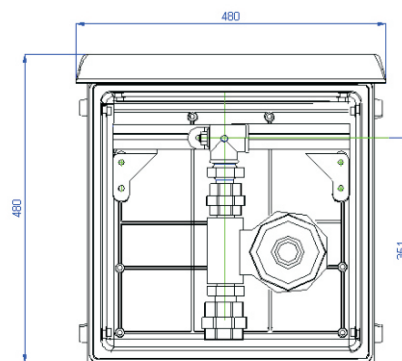
Type PRM-G4-R
RG 10 Regulator
Type PRM-G4-RT
RTG 2 Regulator



Measurement regulation substation
Type PRM-G6-LA

RMG Regulator, gas meter
type G6.
Input 1", Output 1" side

Regulation substation

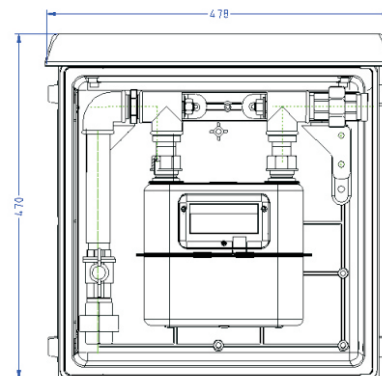


tip PR-1

Regulation substation type PR1
Substation with an RMG regulator
in a 440x440 box

Regulation substation PR-RTG25
Substation with an RTG 25
regulator

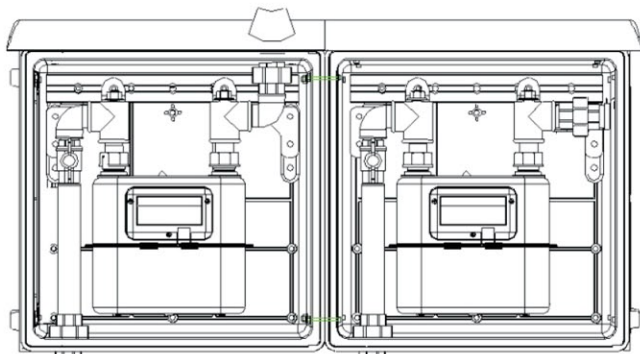
Measurement substation



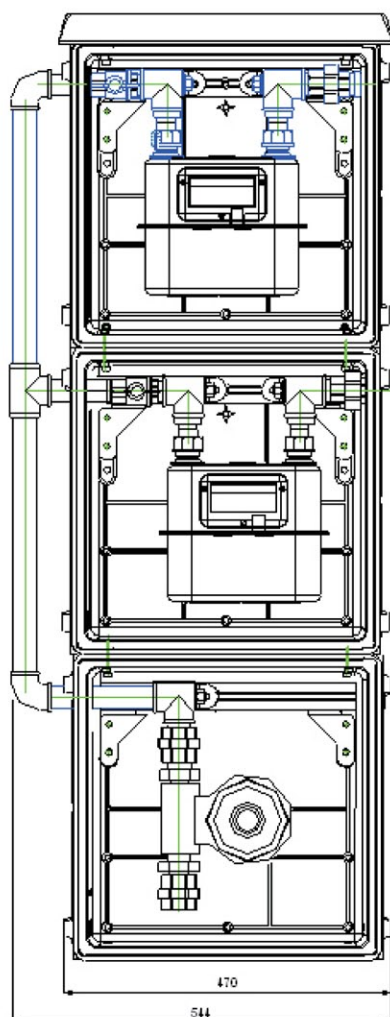
Measurement substation
type PM-1

Substation with a G4 or
G2.5 or G1.6 in a 440x440 box

Measurement type PM-P
Measurement substation
type G4 or G2.5 or G1.6 meter
with a prepaid device

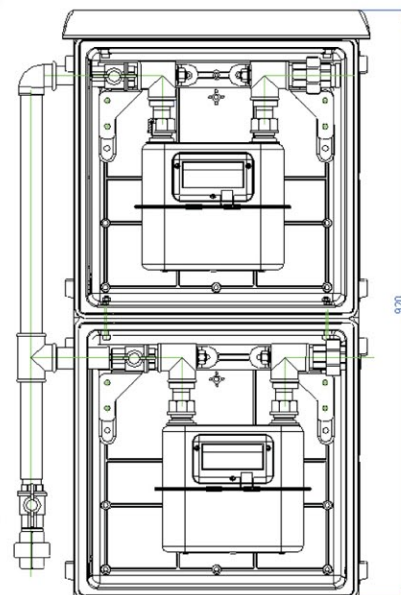


Measurement regulation substation



Measurement substation type PM-2H

Substation with two G4 or G2.5 or G1.6 meters in two 440x440 boxes placed horizontally



Measurement substation type PM-2V

Substation with two G4 or G2.5 or G1.6 meters in two 440x440 boxes placed vertically

Measurement regulation substation type PRM- 2V

Substation with two G4 or G2.5 or G1.6 meters and an RMG regulator in three 440x440 boxes, placed vertically

Measurement regulation substation type PRM- 3V

Substation with three G4 or G2.5 or G1.6 meters and an RMG regulator in four 440x440 boxes, three of which are placed vertically and one is placed sideways, at the bottom left

Measurement regulation substation type PRM- 3V RTG25

Substation with three G4 or G2.5 or G1.6 meters and an RTG25 regulator

